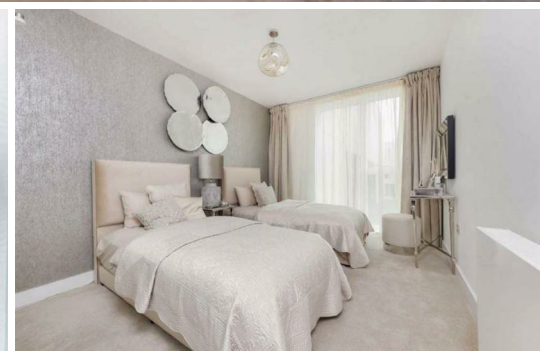
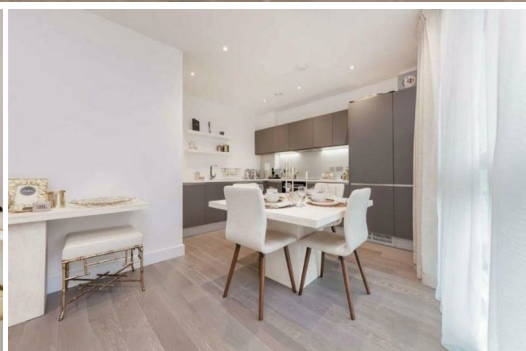
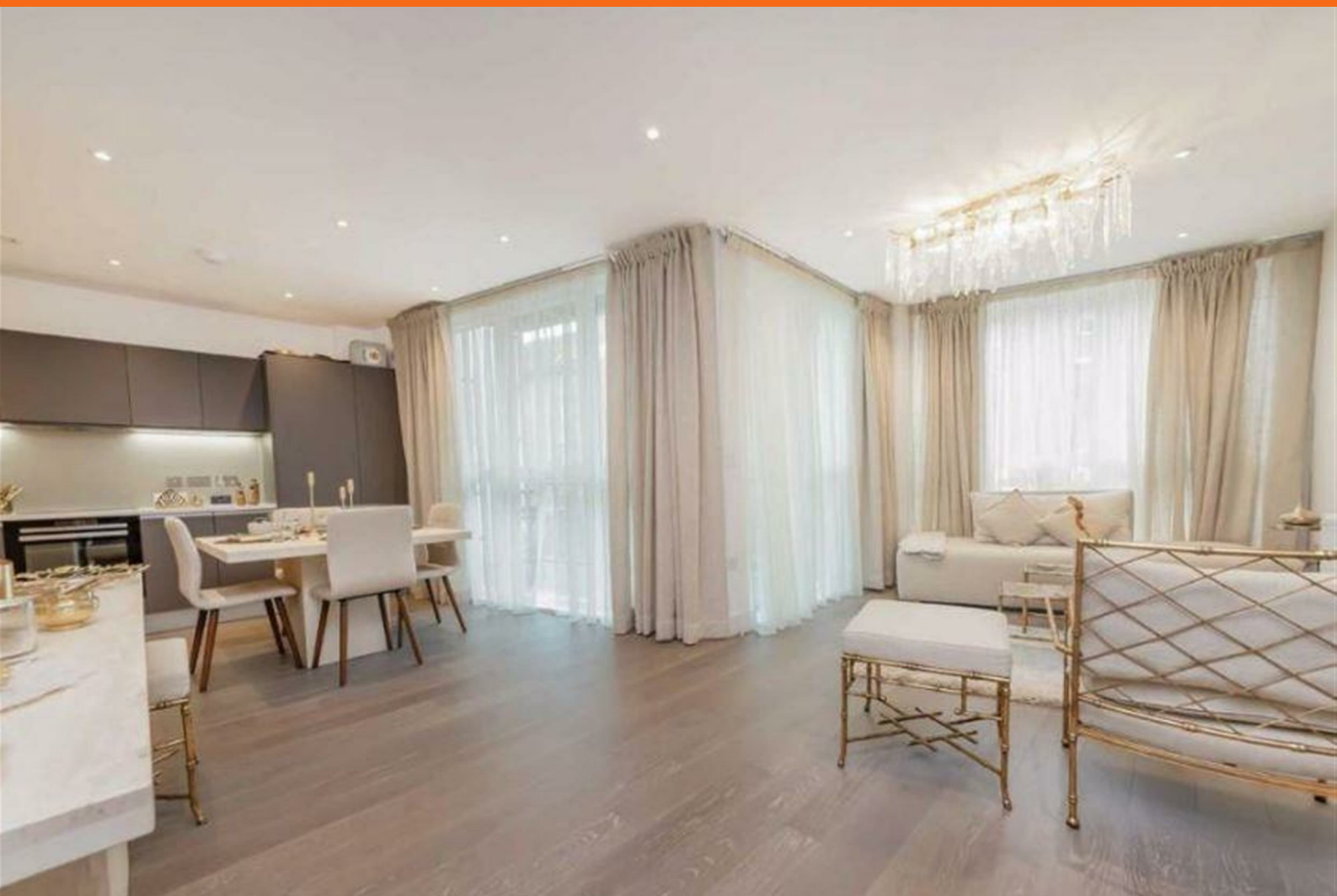


Flat in , NW10

£640 Per Week

RentLondonFlat.com
Making you feel at home



Key Features

- Brand new and spacious apartment
- High spec modern open plan kitchen with appliances
- Underfloor Heating and double glazing
- 2 Stops to Westfield
- 2 DOUBLE bedrooms
- Large balcony
- Quiet residential settings
- 2 Bathrooms
- Large living room with sitting and dining area
- Quick Transport to Central London

Description

Brand new and very spacious 2 DOUBLE bed 2 baths First floor apartment set within this exclusive new development located on a quiet residential spot near Queens Park within Kilburn. Residents benefits of this development include day concierge, residents gym, lift access, cycle storage, communal gardens, secure phone entry system. This development is ideally located for near the underground of Bakerloo line (Queens Park Station or Kensal Rise).

This lovely apartment features a large living room with sitting and dinning area, high spec modern open plan kitchen with appliances, large balcony, 2 DOUBLE bedrooms, master bedroom with en-suite shower room, fitted wardrobes to both bedrooms.

Offered FURNISHED with premium quality furniture.

AVAILABLE NOW

MUST BE SEEN

About Us

For more properties or information about our services please visit our website www.rentlondonflat.com. As London flat specialists, we buy, sell and manage flats for our clients across London. With our experience and insights we can advise you on what and where to buy the best property deals for your requirements, whether an owner occupier, investor or developer.

